



Reliable Customized and Versatile Drymix Mortar and Putty Plants



**Vertical Plants
Horizontal Plants
Skid mounted
Portable Plants**



**RMC/RMP Plant
Putty Plant
Tile Adhesive Plant**



Raw Material Handling For Wet Sand



Sand Drying System and Auto Bag Slitting Machine



Storage Silo For Various Raw Material

About Kleenair

- Technologically oriented, strong Project Engineering Company
- Turnkey Supply of Machinery & Equipment for Building Material Projects
- Vast Experience of material handling, mixing, batching, & weighing, storage helps us to provide plants that are not just better by design but most ideal for continuous operation with minimum manpower, energy & reduced product losses
- High-Tech enterprise integrated with technology development, world class manufacturing & installation set up, Excelled After sales service.
- Good Pilot plant, R & D set up for mixing, conveying, specially for dry mortar formulation.
- Experienced team for automation of entire plant including dosing, weighing, mixing.

Dry Mix Mortar

Dry Mix Mortar is amongst the most versatile material used in modern construction industry. The modern Dry Mix Mortar are produced in a special factory with dedicated facilities on batching & blending of all the necessary ingredients in highly-controlled process. In this way, different types of Dry Mix Mortar products with well-defined properties & performance to meet specific requirement and application can be produced.

Today the Dry Mix Mortar is conquering the market by replacing the traditional job site mixing mortar because of its various advantages.

Minimum space required for the storage

Minimum supervision requires intent quality

Dry mortar mix plant consists of

- Wet sand feeding & drying system,
- Cement handling system,
- Chemical Handling System
- Raw material storage system,
- Weighing, batching & mixing system,
- Finished product storage bin,
- Packing system,
- Dust collection system
- Automation & Control system



Single Deck Screen



3 Deck Screen

5-10 TPH Medium Scale Semi-Automatic Dry Mix Mortar Plant

Advantages : Small & Economical investment, Suitable for small and medium-sized enterprises, where plant height is limited

Installation height of about 6.5 meters, suitable for customers with limited plant height;

The operation is convenient,

1-2 people can operate production;

High output & consistent quality

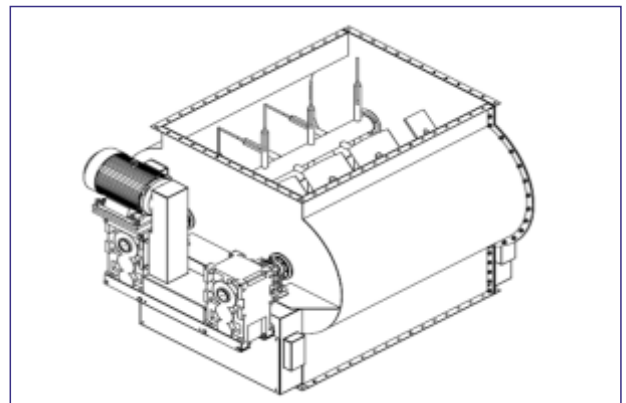
20-40 TPH Fully Automatic Dry Mortar Mix Plant

Special design, compact structure, simple operation, environmental protection and high-level automation, continuous production and high output.,ensuring consistent quality of the product. Suitable for medium and large-scale manufacturers, equipped with automatic packaging system, one-button control of all equipment.

Specialized Mixers



Pneumatic Blender



Twin Shaft Mixers



Plough Shear Mixer

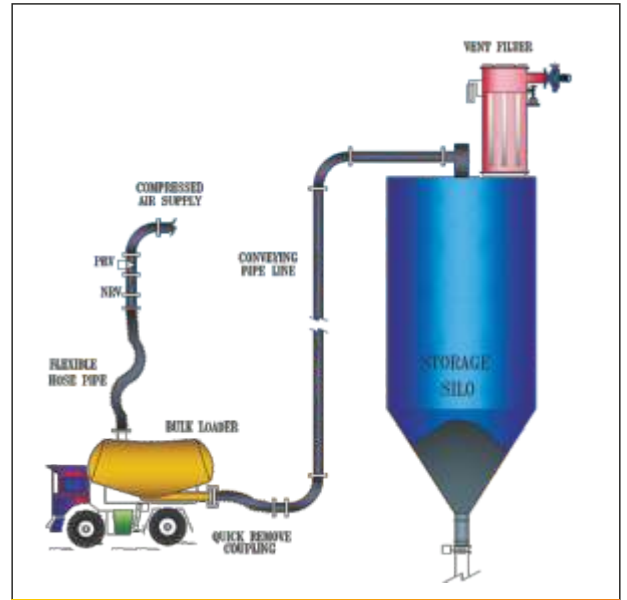
Characterised by outstanding precision, productivity and reliability.



Dryer Debusting System

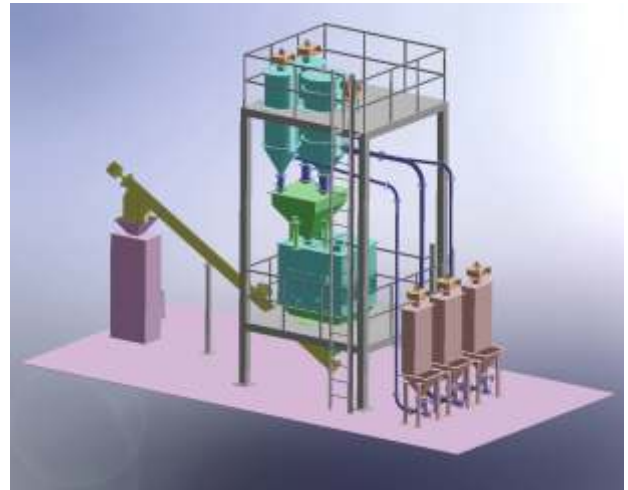
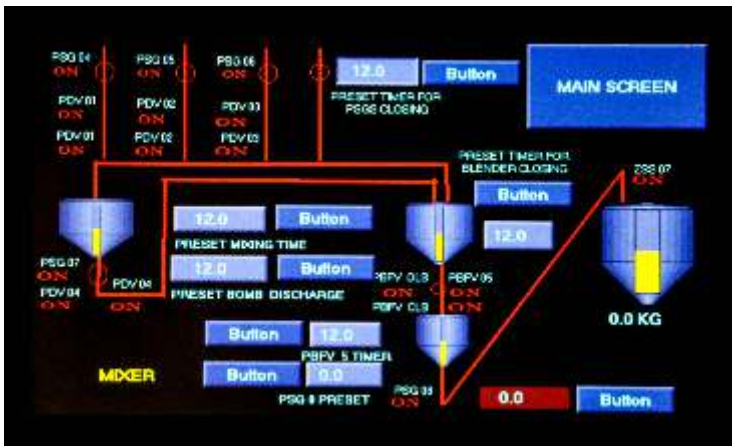


Plant under Installation

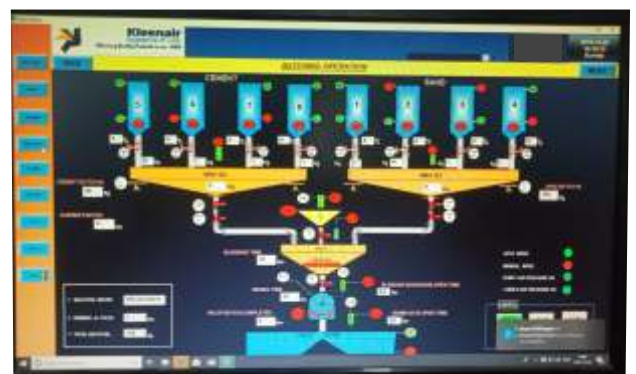


Bulker Unloading into Silo

User Friendly Automation and Control System



Skid Mounted Portable Mixing Plant



Kleenair
Systems P. Ltd.
Delivering Quality Products is our Habit

Kleenair House , Gat No.120-122, Pirangut, Tal : Mulshi , Dist. Pune : 412115 , Maharashtra, India
Tel : 91 20 6675 0380/81/82/84 | Fax: 91 20 6675 0394
Web: www.kleenairsystems.net

We Build for your Success